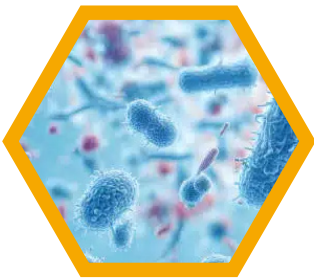




sanisteel 

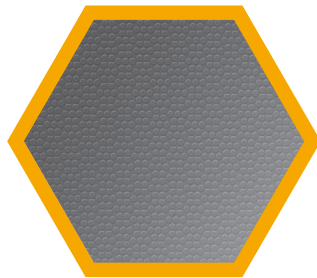
The Ultimate Solution for Hygiene & Safety

Sanisteel is an anti-bacterial, slip-resistant pre-coated steel available for interior surfaces across our wide range of walk-ins. Offered exclusively through Everidge, Sanisteel is certified as food-safe, providing total peace of mind for hygiene in foodservice, food retailing environments, healthcare facilities, and controlled environments. Its robust, hygienic, and slip-resistant properties make it the perfect choice for the most demanding settings.



Anti-Bacterial

Sanisteel activates its anti-bacterial properties in conditions that promote bacterial growth, effectively inhibiting and eradicating germs. It is proven to combat a wide range of harmful bacteria.



Slip-Resistant

Achieve superior slip-resistance with a product designed to maintain grip even in wet and greasy conditions. Independent tests confirm it significantly reduces the risk of slips and falls in high-traffic areas.



NSF Certified

NSF certification ensures this product meets rigorous health and hygiene standards. This certification provides peace of mind, knowing the product is both safe and reliable for use in all applications.



Corrosion Resistance

Sanisteel boasts high resistance to corrosion and scratches, ensuring long-lasting protection and performance in demanding environments.

Scratch Resistant

Durable surface that withstands the rigors of daily use.

Long-Lasting

Maintains its properties over time, ensuring continuous protection.

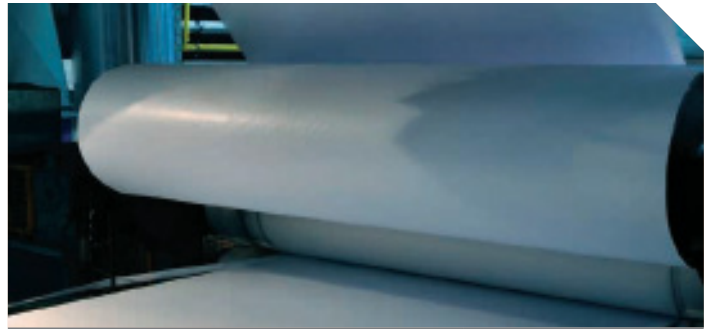
Ideal Applications for

Foodservice, retail, healthcare facilities, and environmental chambers.

Slip-Resistance

The table summarizes the comparative results for floor materials tested to ASTM F-1679 standards. Green shaded values indicate a slip-resistance which is considered acceptable. Red shaded values indicate the surfaces which do not meet the desired slip-resistance under the conditions tested.

All products performed well dry, but the Sanisteel material was the only one of the three which proved acceptable when wet.



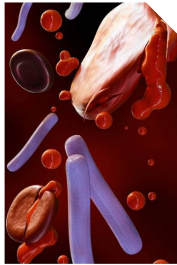
Material Identification	ASTM F 1679	Dry	Wet
Spray Coated Smooth Aluminum		>0.93	0.04
Aluminum Tread-plate		0.73	0.40
ThermalRite Sanisteel		>0.98	0.56

Anti-Bacterial

Sanisteel is engineered with an anti-bacterial pre-coated steel designed to eliminate many harmful and potentially dangerous bacteria strains. Its dual-action technology activates in conditions that promote bacterial growth, inhibiting and eradicating germs. Ideal for foodservice, food retailing environments, healthcare facilities, and environmental chambers. Sanisteel ensures a hygienic and safe space for everyone.



Escherichia Coli



Klebsiella
Pneumoniae



Staphylococcus
Aureus



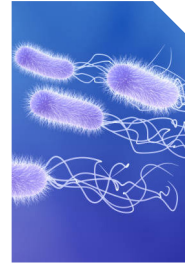
Salmonella
Typhimurium



Listeria
Monocytogenes



Legionella
Pneumophila



Pseudomonas
Aeruginosa

Specifications

- Anti-bacterial, pre-coated steel interior panels and/or floors
- Sanisteel significantly enhances workplace safety
- Slip-resistant (better slip-resistance than ADT by ASTM F-1679 test standards)
- NSF certified
- Eliminates harmful & potentially dangerous bacteria strains
- High resistance to corrosion & scratches



CROWNTONKA® ICS® LOTEMP DOORS™ PREPRITE® SMARTRITE® THERMALRITE®

Proud to be family-owned.

Walk-In Coolers/Freezers • Environmental Chambers • Restoration & Replacement Doors • Blast Chillers • Parts, Service & Warranty • Construction Services
15600 37th Ave N • Suite 100 • Plymouth, Minnesota 55446 • 888-227-1629 • www.everidge.com • info@everidge.com