



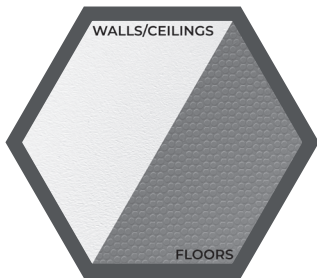
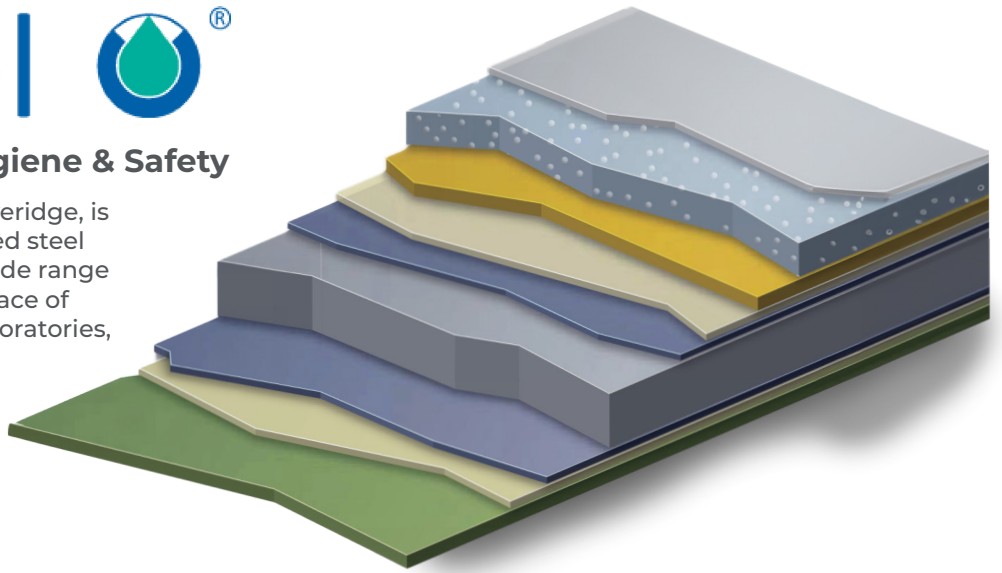
## Environmental Chambers Specifications





## The Ultimate Solution for Hygiene & Safety

Sanisteel, offered exclusively through Everidge, is an anti-bacterial, slip-resistant pre-coated steel available for interior surfaces across a wide range of chambers. Sanisteel provides total peace of mind for hygiene in testing facilities, laboratories, healthcare facilities, and controlled environments. Its robust, hygienic, and slip-resistant properties make it the perfect choice for the most demanding settings.



### Slip-Resistant

Achieve superior slip-resistance with a product designed to maintain grip even in wet and greasy conditions. Independent tests confirm it significantly reduces the risk of slips and falls in high-traffic areas.



### Corrosion Resistance

Sanisteel boasts high resistance to corrosion and scratches, ensuring long-lasting protection and performance in demanding environments.

Engineered with dual-action technology, Sanisteel is designed to eliminate many harmful and potentially dangerous bacteria strains by activating in conditions that promote bacterial growth, thereby inhibiting and eradicating germs. Ideal for testing facilities, laboratories, healthcare facilities, and environmental chambers, Sanisteel ensures a hygienic and safe space.

## CLASSIFICATIONS & APPROVALS

- FM4880 Approved (PN #613 and #713)\*
- EISA Compliant
- U.L., Class 1 listed urethane foam insulation in all environmental chambers
- USDA Approved Materials
- UL Electric
- ULC Electric
- Sliding doors ETL listed
- DOE and IECC compliant
- CAN/ULC
- California Bureau of Home Furnishings and Thermal Insulation License
- State of Oregon
- City of Los Angeles
- Wisconsin (DHILR)
- City of Houston
- California Energy Code Compliant
- Local codes for most cities.



CROWNTONKA® ICS® LOTEMP DOORS® PREPRITE® SMARTRITE® THERMALRITE®

Proud to be family-owned.

Walk-In Coolers/Freezers • Environmental Chambers • Restoration & Replacement Doors • Blast Chillers • Parts, Service & Warranty • Construction Services  
15600 37th Ave N • Suite 100 • Plymouth, Minnesota 55446 • 888-227-1629 • Everidge.com • info@everidge.com • EV5058 • ©2025 Everidge, Inc.

All specifications are subject to change without advance notice.

## THE CHAMBER OF CHOICE

With over 80 years of expertise in cold storage, we have established an unparalleled reputation for product innovation and quality. Our solutions are the preferred choice across testing facilities, healthcare, laboratories, and controlled environments.

Our flexible design and modular construction techniques ensure that our chambers meet your exacting requirements, maximizing operational efficiency for all controlled environments.

## PANEL CHAMBERS

### SPECIFICATIONS

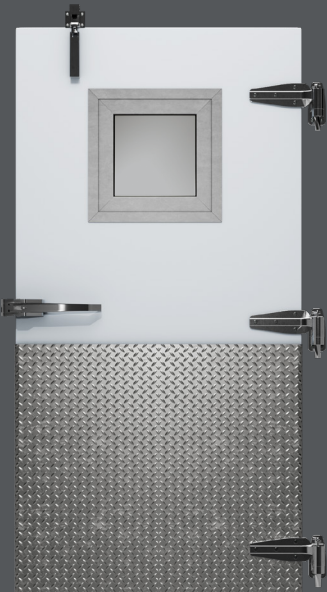
- High-density foam rails
- Designed and manufactured to your exact specifications and dimensions
- Easily constructed
- Metal-facing, foam-in-place bonding
- Flexible foam gasket application on exterior and interior joints for an air-tight seal
- Cam lock panel fastening for strength and rigidity
- Tongue-and-groove construction
- Manufactured in environmentally friendly non-HCFC urethane foam
- Thicknesses: 4", 5" or 6"
- Excellent insulation properties for reduced energy consumption and lower energy costs
- HFO GWP of 1 or less
- FM4880 Approved (PN #613 and #713)\*



### FLOOR PANELS

- **Foot traffic floors** – 14-gauge galvanized steel over foam. Supports 800 lbs/sq ft (uniform load)
- **Cart floors** – .050 (min) smooth aluminum over  $\frac{5}{8}$ " tanza board. Supports 1,000 lbs/sq ft (uniform load)
- **Reinforced cart floors** – .050 (min) smooth aluminum over  $\frac{5}{8}$ " tanza board. Supports 5,000 lbs/sq ft (uniform load) with internal supports
- **Reinforced manual pallet jack floors** – .032 (min) embossed aluminum over  $\frac{5}{8}$ " tanza board with field applied  $\frac{1}{8}$ " aluminum tread brite (ATB). Supports 7,500 lbs/sq ft (uniform load) with internal supports
- **Super manual pallet jack floors** – .032 (min) embossed aluminum over  $\frac{3}{4}$ " tanza board with field applied  $\frac{3}{16}$ " aluminum tread brite (ATB). Supports 10,000 lbs/sq ft (uniform load) with internal supports

## DOORS



- Single flush hinged door as standard
- Fully insulated
- Left or right hinge
- Magnetic gasket
- 26 Ga embossed Acrylume standard finish. Multiple additional finish options are available
- In-fit door full perimeter heat

### Optional Doors

- Double in-fitting hinged door
- Single slide horizontal door – manual
- Single slide horizontal door – power
- Bi-parting slide horizontal door – manual
- Bi-parting slide horizontal door – power
- Glass doors

### Optional Doors Accessories

- Kickplates
- Air curtains
- Jamb plates
- Strip curtains
- Viewports
- In-fit door heated sweep



## ONE-PIECE CHAMBERS – PRODUCT FEATURES

### Simplicity

- Full factory pre-assembly. Only a cement slab needed for install
- On-site 3 to 5-hour installation
- Everidge team start-up support
- Tough, stucco-embossed metal exterior finish with factory baked-on polyester coating



### Efficiency

- Cost-effective: no brick-and-mortar construction needed
- Built-in smart defrost energy controls
- High-efficiency, energy-reducing insulation
- Maintenance-free finish
- Weather-proofed for snow loads, rated for Seismic category D and 170 mph hurricane winds
- Code-compliant for U.S. and Canadian standards
- 20-year materials and workmanship warranty, 1-year on doors

### Flexibility

- Sizes: 6' x 6' to 14' x 50' with the ability to place multiple units within a common wall scenario for increased capacity
- Storage options: cooler, freezer, ambient, combo
- Temperature range: -30°F to +80°F
- Insulation thicknesses: 4", 5" or 6"

### Exterior to Match

We offer a wide range of color options and 4K images, making it easy to select a look that complements your building's exterior.

View available colors and finishes at [www.Everidge.com/colors](http://www.Everidge.com/colors).

### TEMPERATURE CONTROL

**STABILITY ROOMS** | +13°C TO +40°C  
**FINISHED GOODS STORAGE** | +1°C TO +12°C,  
**BULK PRODUCT UNFINISHED GOODS** | -20°C  
**BIOLOGIC MATERIAL STORAGE** | -30°C TO -40°C  
**VACCINE AND DRUG SUBSTANCE STORAGE** | -50°C TO -80°C

### MARKETS SERVED

- Bio Pharma
- Healthcare
- Academia
- Pharmacies
- Agriculture
- Grow Rooms
- Motuaries

### CONSTRUCTION SERVICES & INSTALLATION

Our Construction Services' team provides a single-source point of contact between all stakeholders. This direct line to our seasoned project management team creates efficient and streamlined communication. Our turnkey project management service gives you total peace of mind for all aspects of your walk-in project, ensuring delivery on time and within budget.

With six conveniently located manufacturing facilities across the United States, backed by a national service network, we are well-positioned to support your upcoming cold storage project.

